

THE
NEW YORK
ROCK AND SOUL
Live at the Beacon
REVUE





Giant Records, 345
North Maple Drive,
Suite 205, Beverly Hills,
CA 90210-3855; 75
Rockefeller Plaza, New
York, NY 10019-6908.
Manufactured exclusively
by Warner Bros.
Records Inc., a Time
Warner Company. ©
1991 Giant Records.
Made in USA. All Rights
Reserved. Unauthorized
duplication is a violation
of applicable laws. Giant
logo is a trademark of
Giant Records. Warner
Bros. logo is a registered
trademark of Warner
Bros. Records Inc.



DDD

NEW YORK ROCK & SOUL REVUE

FRI SAT 8PM

- 1 INTRO
 - 2 MADISON TIME - DONALD FAGEN WITH JEFF YOUNG & THE YOUNGSTERS
 - 3 KNOCK ON WOOD - MICHAEL McDONALD, PHOEBE SNOW
 - 4 GREEN FLOWER STREET - DONALD FAGEN
 - 5 SHAKEY GROUND - PHOEBE SNOW
 - 6 AT LAST - PHOEBE SNOW
 - 7 LONELY TEARDROPS - MICHAEL McDONALD
 - 8 DROWNING IN THE SEA OF LOVE - BOZ SCAGGS
 - 9 DRIFTIN' BLUES - CHARLES BROWN
 - 10 CHAIN LIGHTNING - DONALD FAGEN
 - 11 GROOVIN' - EDDIE AND DAVID BRIGATI
 - 12 MINUTE BY MINUTE - MICHAEL McDONALD
 - 13 PEOPLE GOT TO BE FREE - FULL CAST
 - 14 PRETZEL LOGIC - DONALD FAGEN WITH MICHAEL McDONALD
 - 15 MADISON REPRISE - DONALD FAGEN WITH JEFF YOUNG & THE YOUNGSTERS
- PRODUCED BY DONALD FAGEN AND ELLIOT SCHEINER EXECUTIVE PRODUCER: LIBBY TITUS

BEACON

Congratulations. You've just bought (or have otherwise come into possession of) a live-in-concert recording of the New York Rock and Soul Revue. The Revue, which evolved out of a series of club concerts produced by Libby Titus, provides an occasion for our group of like-minded players and singers to get together and perform the sort of music that inspired us to become musicians in the first place--the music we'd like to hear at a good party. Original tunes by the featured performers are also thrown into the mix. In the case of the older songs, authenticity was not a priority. At the same time, I hope we were successful in communicating the spirit of this durable music.

Donald Fagen, July 1991

BEACON

NEW YORK ROCK & SOUL
REVUE
FRI SAT 8PM

1
INTRO
0:52

2
MADISON TIME
DONALD FAGEN WITH JEFF YOUNG & THE YOUNGSTERS
(Ray Bryant/Eddie Morrison) Tro-Ludlow Music, Inc./Second Floor Music BMI
4:19

3
KNOCK ON WOOD
MICHAEL McDONALD, PHOEBE SNOW
(Steve Cropper/Eddy Floyd) Irving Music BMI
3:55

4
GREEN FLOWER STREET
DONALD FAGEN
(Donald Fagen) Freejunket Music ASCAP
4:39

5
SHAKEY GROUND
PHOEBE SNOW
(Jeffrey Bowen/Eddy Hazel/Alphonso Boyd)
Jobete Music Co., Inc./Stone Diamond Music Corp. BMI
3:40

6
AT LAST
PHOEBE SNOW
(H. Warren/M. Gordon) EMI Feist Catalog, Inc. ASCAP
5:32

7
LONELY TEARDROPS
MICHAEL McDONALD
(Berry Gordy, Jr./Gwendolyn Gordy/Tyran Carlo)
Regent Music Corp./Lena Music/Jobete BMI
5:25

8
DROWNING IN THE SEA OF LOVE
BOZ SCAGGS
(Kenneth Gamble/Leon Huff) Warner-Tamerlane Pub. Corp. BMI
5:30

9
DRIFTIN' BLUES
CHARLES BROWN
(Eddie Williams/Johnny Moore/Charles Brown) EMI Unart Catalog, Inc. BMI
4:09

10
CHAIN LIGHTNING
DONALD FAGEN
(Walter Becker/Donald Fagen)
MCA Music Publishing, A Division of MCA, Inc. ASCAP
6:28

11
GROOVIN'
EDDIE AND DAVID BRIGATI
(Felix Cavaliere/Eddie Brigati)
Downtown Music Co./Delicious Music Corp./Top of the Town Music Co. ASCAP
4:24

12

MINUTE BY MINUTE

MICHAEL McDONALD

(Michael McDonald/Lester Abrams) Snug Music/Loresta Music ASCAP

6:26

13

PEOPLE GOT TO BE FREE

FULL CAST

(Felix Cavaliere/Edward J. Brigati, Jr.)

Delicious Apple Music Corp./Purple Records Dist. Corp./Fun City Music Corp. ASCAP

5:18

14

PRETZEL LOGIC

DONALD FAGEN WITH MICHAEL McDONALD

(Walter Becker/Donald Fagen)

MCA Music Publishing, A Division of MCA Inc. ASCAP

4:58

15

MADISON REPRISE

DONALD FAGEN WITH JEFF YOUNG & THE YOUNGSTERS

1:08

MADISON TIME

Ray Bryant's novelty number (the original featured a hip dance rap over the music) gives the band a chance to warm up. My piano choruses are followed by Cornelius Bumpus on tenor, Chris Anderson on trumpet and John Hagen, also on tenor.

KNOCK ON WOOD

Eddie Floyd's Memphis masterpiece is still a bar-band favorite and a natural opener for Michael and Phoebe. Organ solo by Jeff Young.

GREEN FLOWER STREET

I start it off with a few bars on the melodica, which is sort of a harmonica with a little keyboard instead of little holes. The Youngsters' rhythm section really flies on this tune from The Nightfly.

SHAKEY GROUND

Phoebe likes to do this riff tune from the Temptations' high-funk period in her solo performances. Larry DeBari has the guitar spot.

AT LAST

This 1961 bit for Etta James was originally written by Harry Warren for a 1942 movie musical, Orchestra Wives. Phoebe outdoes herself here and inspires Cornelius on tenor as well.



LONELY TEARDROPS

This early Latin-soul tune by young Berry Gordy, his sister Gwen and Tyran Carlo was a big hit for Jackie Wilson in '58. Michael's powerful choruses are separated by a border-bop line for the Revue Horns.

DROWNING IN THE SEA OF LOVE

Gamble & Huff wrote this blues-flavored tune for Joe Simon in '68. Boz sings it with passion. Note guitarist Drew Zingg's impression of the drowning man in the out-choruses.

DRIFTIN' BLUES

The great Charles Brown, who will be 68 this year, does his own classic blues. Charles's low-key style influenced many singers and players, including Ray Charles and Mac Rebennac (Dr. John). Danny Caron (Charles's musical director) has the authentic late 40's guitar style down.

CHAIN LIGHTNING

The soloists get some space on this Steeley Dan tune, actually a blues with altered changes. Chris Anderson (trumpet) is followed by Cornelius Bumpus (tenor) and then by Bob Gurland, a man who uses his voice to simulate a trumpet. After Bob and I trade a few licks, Drew Zingg (guitar) wraps it up.

GROOVIN'

O.K., so we're missing a few Rascals. All was forgiven when ex-Rascal Eddie Brigati and his brother David sang the first bars of this 60's classic. I double Mindy Jostyn's harmonica with the melodica. Birdcalls by David Brigati.

MINUTE BY MINUTE

The Revue version of Michael McDonald's 1979 hit features Cornelius Bumpus on tenor and Drew Zingg on guitar.

PEOPLE GOT TO BE FREE

The Rascal's long string of hits (Good Lovin', How Can I Be Sure, Lonely Too Long, etc.) included this tune. It seemed to have the right spirit for a group-sing. Towards the end, the band goes into rave-up gear and Eddie testifies.

ENCORE: PRETZEL LOGIC

Mike McDonald joined the Steeley Dan touring band in '73. His keyboard work and high harmony parts really slicked up our sound. When he sang alone, the crowd reaction made me wonder what I was doing up front. My favorite part of the show, though, was when Mike sang the line about the shoes.

Donald Fagen, July '91

FEATURING:

Donald Fagen: *Piano, Fender Piano, Melodica, Vocals*

Michael McDonald: *DX Piano, Vocals*

Boz Scaggs: *Vocals*

Phoebe Snow: *Vocals*

Eddie and David Brigati: *Vocals, Percussion*

SPECIAL GUEST:

Charles Brown: *Piano, Vocals*

THE REVUE PLAYERS:

Jeff Young & The Youngsters:

Jeff Young: *Keyboards, Vocals*

John Hagen: *Tenor Sax, Vocals*

Drew Zingg: *Guitar*

Lincoln Schleifer: *Electric and Acoustic Bass*

Dennis McDermott: *Drums*

WITH:

Cornelius Bumpus: *Tenor Sax*

Chris Anderson: *Trumpet*

ALSO WITH:

Danny Caron: *Guitar*

Jimmy Vivino: *Guitar*

Larry DeBari: *Guitar*

Bob Gurland: *Vocal Trumpet*

BACKGROUND VOCALS:

Mindy Jostyn (plus Harmonica), Dian Sorel, Ula Hedwig,
Philip Hamilton (plus Percussion)

RHYTHM AND HORN ARRANGEMENTS:

Donald Fagen, Jeff Young, Jimmy Vivino,
Larry DeBari and Alan Golub

PERSONAL MUSICAL DIRECTORS:

Larry DeBari (for Phoebe Snow)

Danny Caron (for Charles Brown)

Jimmy Vivino (for Eddie and David Brigati)

Announcer: Tom Schiller

Copyist: Alan Golub

Produced by Donald Fagen and Elliot Scheiner

Executive Producer: Libby Titus

Recording and Mixdown: Elliot Scheiner

Mobile Recording Truck: Remote Recording Services – Dave
Hewitt, Phil Gitomer, Dave Roberts

Recorded at the Beacon Theatre, March 1 and 2, 1991

Mixdown: River Sound Studios, New York
Mix Assistance: David Dill and Phil Burnett
Sequencing Engineer: Mark Harder, Hit Factory, New York
Mastered by Glenn Meadows, Masterfonics, Inc., Nashville, TN
Digital Consultant: Roger Nichols

Management: Craig Fruin for HK Management
Tour Management: Ken Krasner
Accounting: Larry Robbins for Robbins, Spielman, Slayton & Halfon
Concert Promotion: Ron Delsener Enterprises
Production Manager: Tom Kipphut
Stage Management: Keith Kevan
Rehearsal Studios: S.I.R. Studios, New York
Sound Company: Clair Bros. Audio, Litiz, P.A.
 Trip Khalaf – House Engineer
 Jim DeVenney – Monitor Engineer
 Tom Foehlinger – Technician

Lighting Company: See Factor, Long Island City, NY
Lighting Design/Director: Jeff Ravitz, Kim Martin (Assistant)
Guitar Tech/Stage Manager: Michael Kaye
Keyboard Technician: Ken Cummings
Drum Technician: Glen Kaufman
Production Assistant: Paul Schultz
Travel: Alan Leeds for Hoffman Travel
Cartage: Mike Maroza, Big Mike Productions, Inc., New York
Union Contractor: Jill Dell'abate
Laminates/Passes: T-bird Entertainment Printing
Accommodations: Hotel Westbury and St. Moritz, N.Y.C.
Limo Service: Music Express, N.Y.C.

Package Design: Greg Ross
Photography: Cesar Vera
Marquee Photo: Pete Fogel-Metal Leg
Artwork: Max Schumann
Hand Lettering: Doyald Young

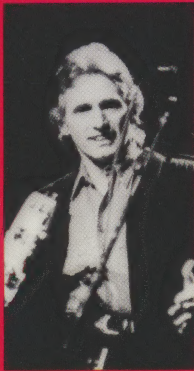
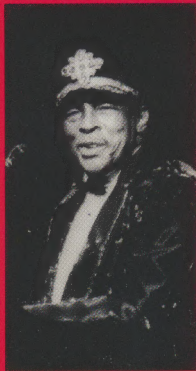
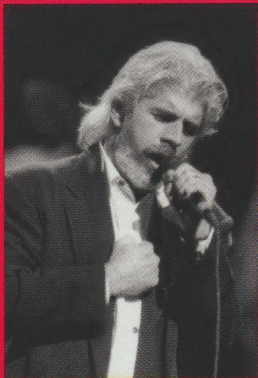
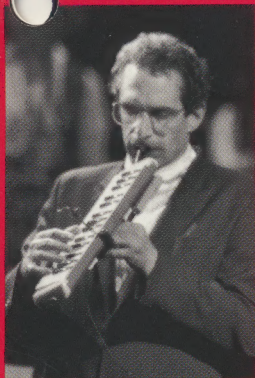
Special Thanks to: Irving Azoff, Ron Delsener, Larry Robbins,
The Rhythm & Blues Foundation, Entire Staff at S.I.R. Studios, N.Y.C.

Michael McDonald appears courtesy of Reprise Records
Boz Scaggs and Philip Hamilton appear courtesy of Sony Record Corp.
Phoebe Snow appears courtesy of S.B.K. Records
Charles Brown appears courtesy of Rounder Records
Dennis McDermott appears courtesy of Elektra Entertainment

This program was edited down from material recorded at the Beacon Theatre on March 1 and 2, 1991. Editing, resequencing and minimal post-recording were done to enhance home listening.

The logo for Giant Records, featuring the word "giant" in a stylized, lowercase font with a vertical line through the letters.

©1991 Giant Records. Made in U.S.A.





THE
NEW YORK
ROCK AND SOUL
Live at the Beacon
REVUE

giant



© 1991 Giant Records, manufactured exclusively by Warner Bros. Records Inc., a Time Warner Company

Mfg. by WEA Manufacturing, Made in U.S.A. 9 24423-2